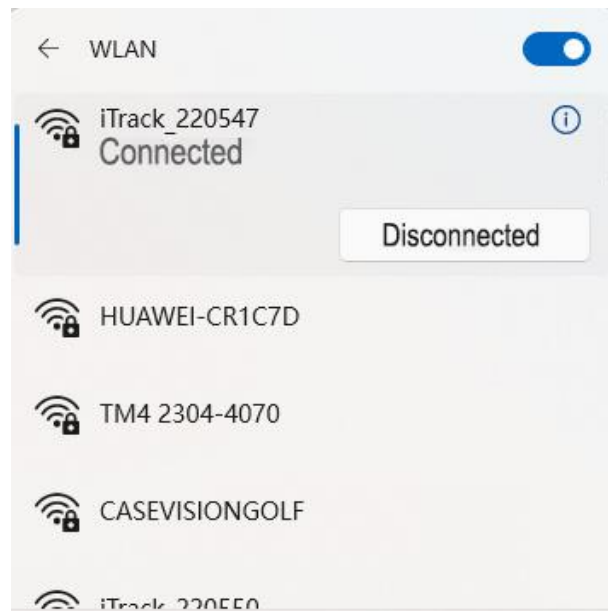


Connecting iTrack with Creative Golf

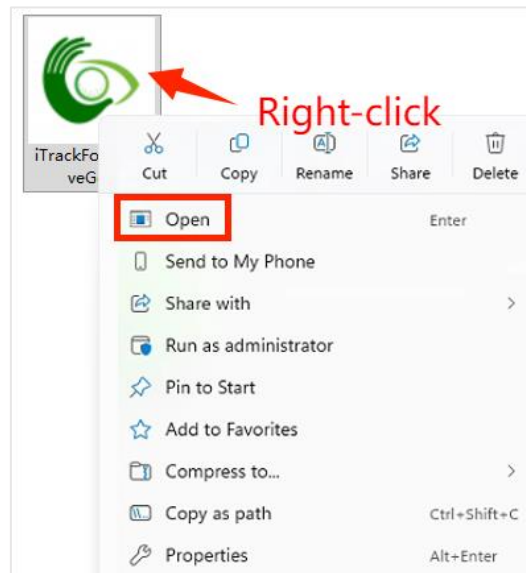
1. Download **iTrackForCreativeGolf.exe** from <http://www.casevisiongolf.com>.
2. Turn on the iTrack power and wait for it to start up completely. Connect the iTrack to the Creativegolf simulator. There are two connection methods: 1. WiFi connection, 2. Direct network cable connection.

(1) WiFi Connection

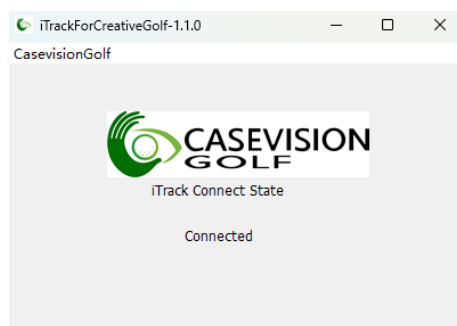
After iTrack has finished starting up, you should be able to find the iTrack WiFi network in your computer's network connections. Connect your computer to this hotspot. The default password for the iTrack hotspot is **12345678**.



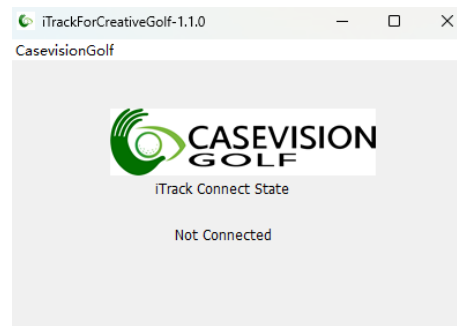
Right-click on **iTrackForCreativeGolf** icon to open the context menu, then select "Open" to run **iTrackForCreativeGolf**.



iTrackForCreativeGolf application window will display "Connected," indicating that the device is connected, if the computer is not connected to the iTrack WiFi, the center of the window will display "No connect," indicating that the device is not connected.



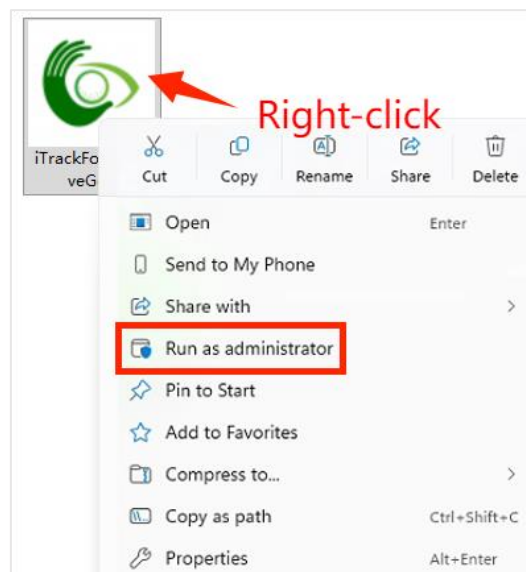
connected



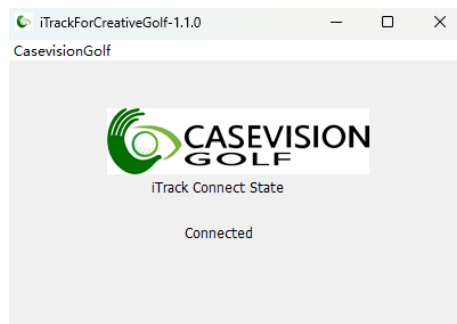
no connected

(2) Direct network cable connection

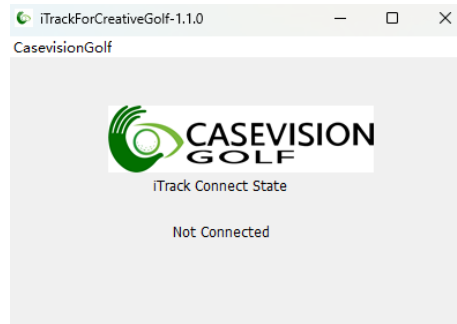
Right-click on the iTrackForCreativeGolf icon, and from the pop-up menu, select "Run as administrator" to run iTrackForCreativeGolf.



iTrackForCreativeGolf will display "Connected" when the device is connected; if the computer is not connected to the iTrack WiFi, the window will display "No connect" in the center, indicating that the device is not connected.



connected

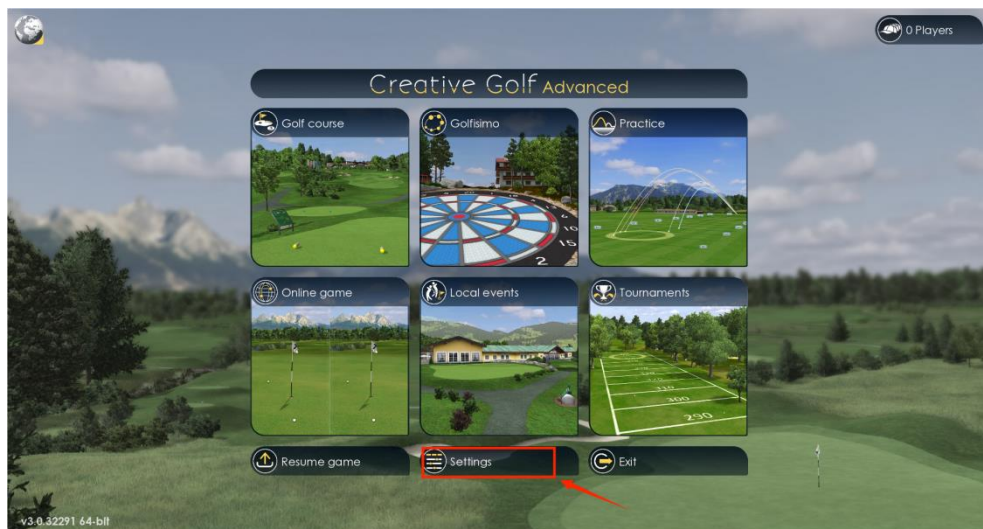


no connected

3. run CreativeGolf simulator software.



You need to adjust the "Tracking Device Type" in the settings. Click on the tracking device settings to open the dropdown menu, and select "iTrack". Then click "Accept and Save".





In “restart” windows, select "Yes" to link the simulator with the iTrack.



4. Once the simulator restarts and the settings are successfully applied, you can fully enjoy the great features that CreativeGolf offers: Golf courses, Golfismo, driving range, online games, local events, and tournaments.

